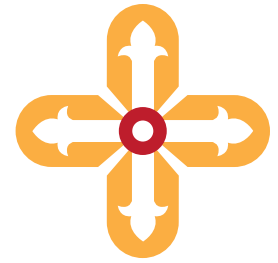


# GLENN MEMORIAL

UNITED METHODIST CHURCH



## ■ The Worship of God

SEPTEMBER 11, 2022 | 11:00 A.M.

14TH SUNDAY AFTER PENTECOST

OUR FALL SERIES: *CELEBRATING FAITHFULNESS*

**Welcome to worship! This fall we are celebrating the many faithful servants of Christ who make sure Glenn Memorial UMC never falters in loving God and neighbor, even during challenging times.**

**It only seems right that we start this celebration of faithfulness with worship.**

**So many people share their time and care to make possible meaningful worship at Glenn—people visible during the service and others who work throughout the week to help all of us offer our very best gifts to God. Today we give thanks for those servants and ponder how each of us can join in this work of the people, this liturgy. We all make worship what it is at Glenn—a vibrant and joyful act of praise!**

---

The artwork on the cover is *The Building of the Tabernacle with the Israelites Sewing Curtains*, by Adriaen van Stalbeem, circa 1610-20.

GLENN CHURCH WELCOMES YOU

Glenn Memorial United Methodist Church is committed to loving God and loving neighbor with our whole selves – heart, mind, soul, and strength. As Jesus loved those around him, we believe that all persons are of sacred worth and dignity as part of God’s creation. We welcome all persons into the full life and ministry of our congregation, regardless of race, culture, ethnicity, age, sexual orientation, gender identity, family or socioeconomic status, education, politics, physical or mental ability, or faith history.



LET US KNOW YOU’RE HERE

Register your attendance online, using the QR code, or in the attendance pad at the end of the pew.

Childcare is available throughout the service in the Nursery (room 200 , Church School Building), Two’s & Three’s Room (room 206), and on the Playground (entrance next to room 206), or Pre-K/Kinder Room (room 304). Parents/guardians, please escort your children & sign in with our Childcare Staff.

Hearing devices, pew cushions, and Children’s Worship Kits are available from an usher. We hope to make improvements to the sound system in the Sanctuary. In the meantime, for optimal sound, sit a few rows back (rather than the first rows of pews) and not under the balcony.



GLENN CHURCH & RECONCILING MINISTRIES

Glenn Memorial UMC has been a proud affiliate of Reconciling Ministries Network since 2014, and welcomes and affirms all LGBTQ+ persons.



YOUR GIFTS SUPPORT GLENN

**Your gifts directly support the ministries of Glenn.** Scan the QR code or visit **www.glennumc.org/give** to donate securely online.

*The Altar Flowers are in honor of the lives lost on 9/11. On the 9/11 memorial, there is a white rose placed on the name of the person when they have a birthday. We are using white roses today to remember and to pray for peace in this world.*



## ■ Welcoming All to the Table

*\*You are invited to stand as you are able in body and spirit.*

### OPENING VOLUNTARY

#### Reverie

William Henry Harris (1883-1973)

### WORDS OF WELCOME

The Rev. Brent Huckaby

### \*CALL TO WORSHIP

Leader: Make a joyful noise to the Lord, all the earth.

Pulpit Side: **Worship the Lord with gladness!**

Lectern Side: **Come into God's presence with singing!**

Leader: Know this! The Lord is God.

Pulpit Side: **Know this! We belong to the Lord who made us.**

Lectern Side: **Know this! We are God's people, and the sheep of God's pasture.**

Leader: So, enter God's gates with thanksgiving,

Pulpit Side: **Come into the holy courts with praise.**

Lectern Side: **Give thanks to God and bless God's holy name.**

Leader: For the Lord is good;

Pulpit Side: **God's steadfast love endures forever,**

Lectern Side: **God's faithfulness is for all generations.**

### \*PROCESSIONAL HYMN UMH #660

#### God is Here

ABBOT'S LEIGH

*During the final verse, all children are invited to come up to the chancel area.*

### CHILDREN'S TIME

The Rev. Susan Pinson

### \*THE PASSING OF THE PEACE

# ■ Personal Transformation

## GRADUAL

### **Behold, the Tabernacle of God**

William Henry Harris

Behold, the tabernacle of God is with us, and the Spirit of God dwelleth within you: for the temple of God is holy, Which temple you are: for the love of whom you do this day celebrate the joys of the temple with a season of festivity. Alleluia.

*-Sarum Antiphon for the Dedication of a Church*

## THE SCRIPTURE LESSON

### **Exodus 35:20-29**

Mary Lindsey Lewis

One: May God bless the reading of the Word.

**ALL: Thanks be to God.**

## SERMON

### **Building Worship**

The Rev. Mark Westmoreland

# ■ Transforming the World

## \*HYMN UMH #368

### **My Hope is Built**

THE SOLID ROCK

## \*LITANY FOR WORSHIP

The Rev. Jennifer Hansen

Ever-present and almighty God, we meet you in this holy space to sing, to pray, and to rejoice in your gifts of creation, life, relationship, and community.

### **All creation is a song of praise to God.**

We come to this place seeking answers, longing for comfort, and desiring to celebrate our joys together. We are grateful for this community and for these people who surround us with agape love in all moments of our life. Together, we offer our praise to you.

### **All creation is a song of praise to God.**

We give thanks that we can do the work of the people—the liturgy—singing, praying, reading, leading. Blessed with a variety of gifts, we offer what we have, creating beauty together to the glory of your name.

### **All creation is a song of praise to God.**

We give thanks for those who lead us in worship: for the clergy of Glenn Memorial United Methodist Church and others here who have served as clergy in our denomination, for those who study your Word to share your message for our day, and for those who lift before you our prayers of petition and care.

### All creation is a song of praise to God.

We give thanks for music and for those who lead us in song: for singers, instrumentalists, composers of all ages, for those who sing from the chancel and those who sing from the pew. With our psalms, hymns, and spiritual songs, we worship you and rejoice in the power of music to reveal your splendor in a language beyond words.

### All creation is a song of praise to God.

We give thanks for the beauty of this space: for the architects of this magnificent sanctuary, for the hands that built it, for those who adorn it now with beautiful kneelers, chairs, flowers, candles and brass, and for acolytes and crucifers who lift before us symbols of your Son and Spirit.

### All creation is a song of praise to God.

We give thanks for those who help us find relationship with one another: for ushers and greeters, for the person who said hi the first time we stepped into this Sanctuary, and for those whose warmth and care continue to shine the light of Christ upon all who enter here. Let your love create through us community on earth as it is in heaven.

### All creation is a song of praise to God.

As we leave this place, let the songs and splendor of this hour linger in our hearts, that we might recognize in the common holiness of our days the never-ending hymn of praise offered you by all creation.

### All creation is a song of praise to God. Thanks be to God. Amen.

MORNING PRAYER AND THE LORD'S PRAYER

Rev. Hansen

**ALL: Our Father, who art in heaven, hallowed be thy name; Thy kingdom come, thy will be done on earth as it is in heaven. Give us this day our daily bread. And forgive us our trespasses, as we forgive those who trespass against us. And lead us not into temptation, but deliver us from evil. For thine is the kingdom, and the power, and the glory, forever. Amen.**

OFFERTORY

Psalm 150

Philip Stopford (b. 1977)

O praise God in His holiness: praise Him in the firmament of his power. Praise Him in His noble acts: praise Him according to His excellent greatness. Praise Him in the sound of the trumpet: praise Him upon the lute and harp. Praise Him in the cymbals and dances: praise Him upon the strings and pipe. Praise Him upon the well-tuned cymbals: praise Him upon the loud cymbals. Let every thing that hath breath: praise the Lord.

\*DOXOLOGY UMH #95

Praise God, From Whom All Blessings Flow

OLD 100TH

Praise God, from whom all blessings flow; praise God, all creatures here below; praise God above, ye heavenly host; praise Father, Son, and Holy Ghost. A - men.  
(Cre - a - tor, Christ, and Ho - ly Ghost.)

## PRAYER OF THANKSGIVING

**ALL:** Almighty God, with thanksgiving we enter your holy house; we sing and speak your word; and we pray for each other and the world. Now, receive this offering as our act of praise, our affirmation of trust in you, and our commitment to make real your mercy and care for all your children.

### \*CLOSING HYMN

#### When the Morning Stars Together

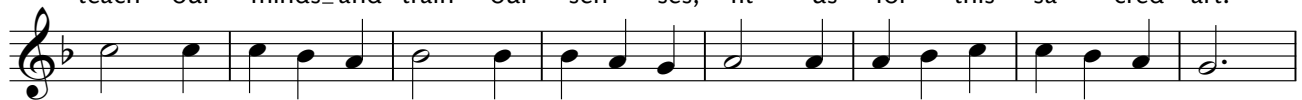
HYFRYDOL



1. When the morn - ing stars to - geth - er their cre - a - tor's glo - ry sang,  
2. When in syn - a - gogue and tem - ple voi - ces raised the psalm - ists' songs,  
3. Voice and in - stru - ment, in un - ion through the a - ges, spoke thy praise.  
4. Lord, we bring our gift of mu - sic; touch our lips and fire our hearts,



and the an - gel host all shout - ed till with joy the heav - ens rang,  
off - er - ing the ad - o - ra - tion which a - lone to you be - longs,  
Plain - song, tune - ful hymns, and an - thems told your faith - ful, gra - cious ways.  
teach our minds and train our sen - ses, fit us for this sa - cred art.



then your wis - dom and your great - ness their ex - ul - tant mu - sic told,  
when the sing - ers and the cym - bals with the trum - pet made ac - cord,  
Choir and or - che - stra and or - gan each a sa - cred off - ering brought,  
Then with skill and con - se - cra - tion we would serve you, Lord, and give



all the beau - ty and the splen - dor which your migh - ty works un - fold.  
glo - ry filled the house of wor - ship, and all knew your pre - sence, Lord.  
while, in - spired by your own Spi - rit, po - et and com - po - ser wrought.  
all our powr's to glo - ri - fy you, and in ser - ving ful - ly live.

## ■ We Go Forth

### \*BENEDICTION

Rev. Westmoreland

### CLOSING VOLUNTARY

#### “Hallelujah, has been restored...” from Rubrics (1987)

Dan Locklair (b. 1949)

Currently the Composer-in-Residence and Professor of Music at Wake Forest University in Winston-Salem, North Carolina, Dan Locklair is a talented composer and organist. The piece, “Rubrics” is based on headings and instructions for parts of the worship service, as stated in the Book of Common Prayer. This energetic movement features a dialogue between two bright divisions of the organ, and it is based on the musical pitches F, G, C, and D.





## ■ Announcements & Special Events

SNACK IN A BACKPACK – *VOLUNTEERS NEEDED!*

**Thursdays, 3:30-5:30pm, Youth & Activities Building**

Weekly shoppers needed, plus volunteers to set up, sort food, load cars, and deliver to our partner schools. Primary volunteer hours are Thursdays, 3:30-5:30pm, with deliveries on Friday morning. Contact Deborah Marlowe (dmarlowe@emory.edu) for more information.

THURSDAY BIBLE STUDY: PHILIPPIANS WITH PASTORS MARK & SUSAN

**Begins Thursday, September 15, 11:30am | via Zoom** | Contact Kat Griffith (kgriffith@glennmc.org) for the link

EMORY-GLENN DAY! WORSHIP & LUNCH ON THE LAWN

**Next Sunday, September 18, One morning Worship Service at 11am**

**Sign up to help with lunch here:** <https://bit.ly/glenn-emory-day-2022>

FRIENDSHIP GROUP: MEDICARE LUNCH & LEARN

**Thursday, September 22, 11am, Youth and Activities Building**

Join us for a free lunch & learn with Keith Nabb, the Founder and Principal of Affordable Medicare Solutions, specializing in Medicare planning and individual health insurance coverage. This will be a no-pressure-to-buy engaging seminar to educate consumers, professionals, and families about Medicare's latest changes. Complimentary boxed lunch provided thanks to Affordable Medicare Solutions. RSVP with Rev Susan Pinson (spinson@glennmc.org 404.634.3936, ext 103).

THE MOST SEGREGATED HOUR: PART 3

**September, 25th, 12noon, Ward Fellowship Hall**

Join us for Part 3 of our conversation on how we got to the place where 11:00 Sunday morning is called the most segregated hour. Now we will turn our focus to what we are called to do about it.



**To register for upcoming events or to learn how you can become more involved at Glenn, please visit [glennmc.org/upcoming-events](https://glennmc.org/upcoming-events) or contact any of our staff.**

THE REV. MARK WESTMORELAND  
*Senior Pastor*  
mwestmoreland@glennumc.org

THE REV. SUSAN PINSON  
*Senior Associate Pastor for Children,  
Older Adults, and Congregational Care*  
spinson@glennumc.org

THE REV. BRENT HUCKABY  
*Associate Pastor for The Gathering & Spiritual Formation*  
bhuckaby@glennumc.org

THE REV. JENNIFER HANSEN  
*Executive Pastor*  
jhansen@glennumc.org

MICHAEL DAUTERMAN  
*Director of Music and Worship Arts*  
mdauterman@glennumc.org

KÄTHE WRIGHT KAUFMAN  
*Associate Director of Music and Worship Arts*  
kkaufman@glennumc.org

ERICA BITTING  
*Communications Director*  
ebitting@glennumc.org

BEN LADNER  
*Youth Director*  
bladner@glennumc.org



1660 North Decatur Road NE, Atlanta, GA 30307  
on the campus of Emory University  
404-634-3936 | glennumc.org

**Facebook, Youtube, Instagram: @glennUMC**



## ■ Giving

### **Pledge Report as of August 31st**

2022 Pledge Budget: \$1,348,222

Pledge collection through August 31: \$860,213

Needed: \$488,009

Needed: 36.1%

### **To give to Glenn visit:**

**<https://www.glennumc.org/give>,**

**or scan the QR code:**



## ■ Next Sunday

### **Sunday 9.18 | 15th Sunday After Pentecost**

9:30am Children's Choirs (Church School Building)

9:45am Youth & Adult Sunday School (Zoom,  
CSB, and Youth & Activities Building)

11am Worship (Sanctuary)

5pm The Gathering Worship  
(Ward Fellowship Hall)

## ■ You are Invited

### **Want to stay updated on the Glenn Community?**

Visit **[www.glennumc.org](http://www.glennumc.org)** and subscribe to the newsletter on the homepage. We send one newsletter every Friday, and occasional updates from Rev. Mark.

### **Give Altar Flowers in Honor or Memory of Loved Ones**

Contact the church offices or sign up at:

**<https://bit.ly/glenn-flowers>**